

RAIDON

iR8777-S3 快速安裝導引

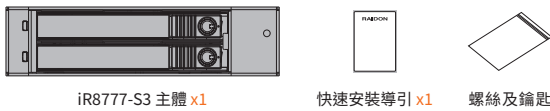
產品示意圖與配件表



- A LED 指示燈
- B 硬碟抽取盒把手
- C 頂出按鍵
- D 硬碟抽取盒鎖
- E 靜音按鈕
- F SATA 15Pin 電源輸入埠
- G SATA 連結埠
- H RAID 模式設定

打開包裝外盒後,包裝內容包含下列組件:

產品配件表



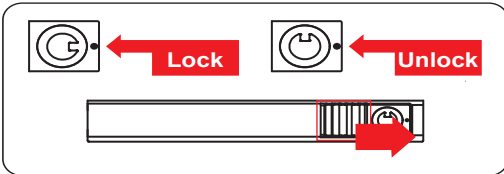
- 請先確認相關配件與產品本身是否有受損或是缺少配件,若有任何疑問,請與您的經銷商或業務人員聯絡。
- 請前往官網 (www.raidon.com.tw) 下載說明書、驅動程式以及其餘相關資源。



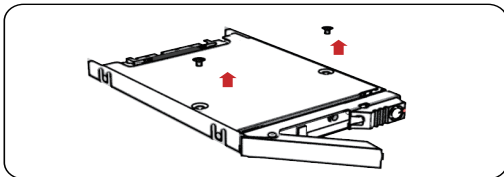
1

v1.0(Sep. 2023)

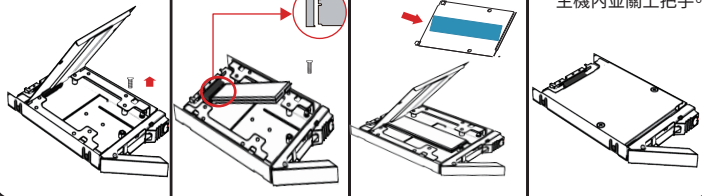
- 使用配件內附的鑰匙解鎖硬碟抽取盒鎖後,將頂出按鍵向右推移,硬碟抽取盒把手便會彈開,即可取出抽取盒。



- 抽出M.2 SATA Bridge 托盤組,取下上蓋的2顆螺絲。



- 打開上蓋,取出螺絲。
- 插入 M.2 並鎖上螺絲。
- 蓋回上蓋。
- 鎖上上蓋螺絲。M.2 安裝完成後請將抽取盒平移主機內並關上把手。



- 硬體安裝完成。您可開啟電源進行相關設定與應用。
- 你的作業系統將會自行辨識硬體,辨識成功後請先完成硬碟格式化,完成後即可使用。

3

燈號說明

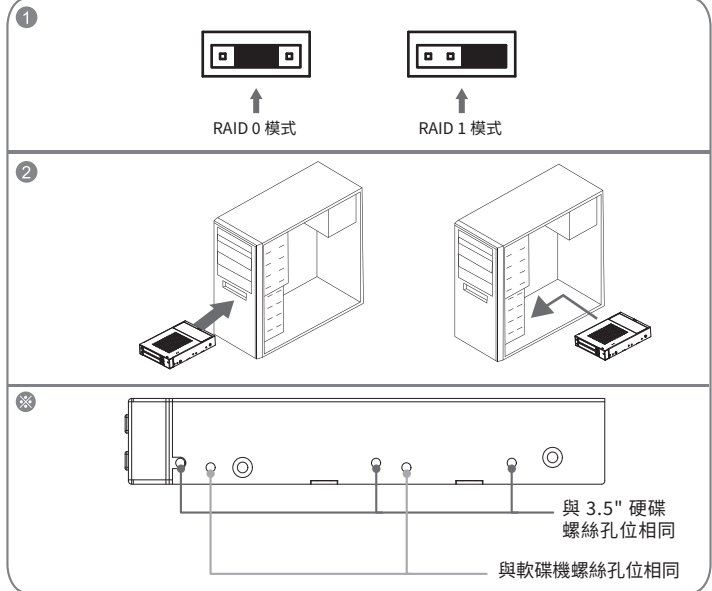
狀態	M.2 狀態燈	蜂鳴器
M.2 閒置	藍燈恆亮	N/A
資料存取	紫燈閃爍	N/A
無M.2/M.2 故障	紅燈恆亮	鳴叫
資料重建 - 來源碟	藍燈恆亮	N/A
資料重建 - 目標碟	紅燈閃爍	N/A

硬體安裝

請參照下列步驟,完成 iR8777-S3 的硬體安裝:

- 在背板上的 RAID 模式設定中以跳線設定 RAID 模式,原廠預設值為 RAID 1。
- 將主體裝置在機殼上,連接相關連接線,並確認固定螺絲是否鎖上。

※ 螺絲孔位說明



2

產品使用注意事項

- 若想得到較佳的使用效能與選購硬碟的便利性,建議使用規格及廠牌相同的 2.5 吋硬碟。若 RAID 1 模式下,當其中有任何一顆硬碟毀損時,新更換的硬碟容量需大於或等於原硬碟容量。
- 請確保使用的硬碟是不含壞軌的,以避免當其中一顆硬碟發生故障時,可能導致系統當機或所有資料遺失。
- 建議於使用前決定 RAID 0 或 RAID 1 模式。使用後,若需再重新設定,請先將資料備份至其他硬碟,否則將會造成硬碟內的資料損毀。
- 在新增或變更 RAID 模式後需重新啟動,以確保完成更新為新的 RAID 模式。
- 強烈建議除了使用 iR8777-S3 的資料儲存功能外,請針對重要資料備份到另一個儲存裝置上或遠端備份,雙重備份您重要的資料。若您儲存在 iR8777-S3 的資料損毀或遺失,RAIDON 將不負任何的責任。

感謝您使用 銳銜科技股份有限公司 的產品。

本手冊裡的資訊在出版前雖然已經被詳細確認,但實際產品規格將以出貨時為準;任何的產品規格或相關資訊更新,請您直接上 www.RAIDON.com.tw 網站查詢,或直接與您的業務聯絡窗口聯繫,本公司將不另行通知。

如果您對 銳銜科技 的產品有任何疑問,或是想獲得最新產品訊息、使用手冊或軟體,請您聯絡 supporting@raidon.com.tw,我們將儘速回覆您。

RAIDON 為 銳銜科技股份有限公司 旗下品牌之一
本說明相關產品內容歸 銳銜科技股份有限公司 版權所有

4

RAIDON

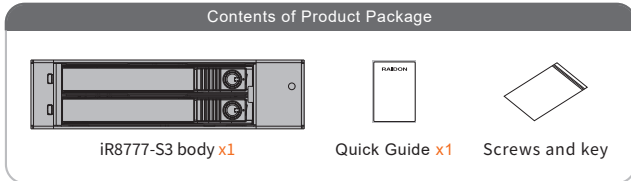
iR8777-S3 Quick Installation Guide

Product Diagrams and Contents of Product Package



- A LED Indicator D HDD tray key lock G SATA Port
- B Removable drive tray E Mute Button H RAID Switch
- C HDD Tray Ejection F 15 PIN Power Connector

After you open the outer package, make sure that the following items are contained in the package:



- Please check the product and accessories for any defect or missing parts. If you have any questions, please contact your product supplier.
- Please visit the official website (www.raidon.com.tw) to download user manuals, drivers and other related resources.



v1.0(Sep. 2023)

1

LED Instruction

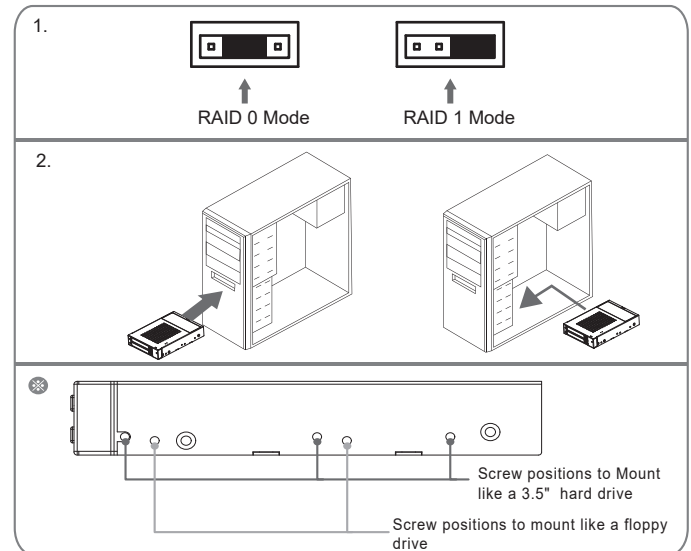
Constant	HDD Status Light	Buzzer
M.2 Idle	Blue light always on	N/A
Data access	Purple light flashing	N/A
No M.2 / M.2 failure	Red light always on	ON
Rebuilding - Source	Blue light always on	N/A
Rebuilding - Target	Red light flashing	N/A

Hardware Installation

Please install iR8777-S3 as the following instruction.

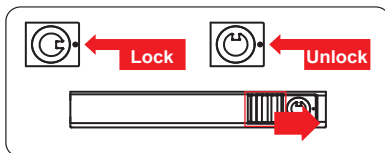
1. The RAID mode is set by jumper in the RAID mode switch on the backplane. The default value is RAID 1.
2. Install the product unit into the computer chassis and make the necessary connections and mount the product unit properly and securely to the bay position desired.

※ Mounting Positions

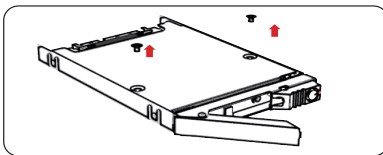


2

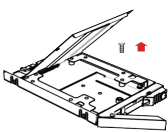
3. For the 2.5" HDD tray, please use the key included in the accessory kit to unlock the 2.5" HDD tray key lock and push the HDD eject button to the right, the 2.5" HDD tray handle will pop up to remove the tray.



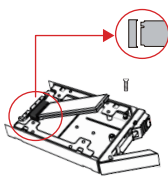
4. Pull out the M.2 SATA Bridge tray set, and remove the 2 screws on the upper cover.



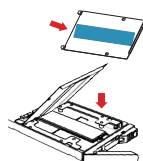
5. Open the upper cover and remove the screw.



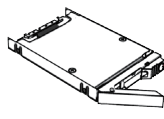
6. Insert M.2 and fix the screw.



7. Put the upper cover back.



8. Fix the screws. Install the M.2 SATA Bridge tray back into the iR8777



9. When hardware installation is completed, you can turn on the power of the main unit to proceed with relevant settings and applications.
10. Installation completed. Your operating system should automatically detect the hard drives within. Please proceed to format the drives. Once formatting is completed, you may then start to operate the device.

3

Precautions Before Application

1. We suggest you using 2 brand new 2.5-inch SATA hard drives with the same brand and model number for the best performance. When any one of the hard drives is failed, please ensure that the capacity of the new hard drive is the same or bigger than the original one.
2. Please ensure that the hard drives are free of bad tracks before using, otherwise, it may cause system crash in turn resulting in data loss.
3. We strongly suggest you that the RAID mode should be decided before starting use iR8777-S3. If you need to reset the RAID mode after using iR8777-S3, please remember to backup your data on the other hard drives or the data may lose.
4. A reboot is required after adding or changing RAID mode to ensure that the update is completed to the new RAID mode.
5. We strongly recommend you to keep an extra copy at your important personal data other than stored in your iR8777-S3 product. RAIDON will not be responsible of your data loss problem.

Thank you for choosing RAIDON's product.

The information provided in this manual was checked before publication, but the actual product specifications may have changed before shipping; Latest product specifications and updates can be found at www.RAIDON.com.tw or through your sales representative. No separate notifications will be provided by our company.

If you have any questions about RAIDON products or would like to receive the latest product information, instruction manuals, or firmware, please contact Supporting@raidon.com.tw for assistance.

RAIDON is one brand under RAIDON TECHNOLOGY, INC.

All product-related content in this manual are copyrighted by RAIDON TECHNOLOGY, INC.

4